



An approach for detecting false news using machine-learning techniques

¹Vijay P, ²Vishal Surya AM, ³Revathy S

^{1,2}Department of Computer Science and Engineering, St. Joseph's Institute of Technology OMR, Chennai, Tamil Nadu, India

³Assistant Professor, Computer Science and Engineering St. Joseph's Institute of Technology OMR, Chennai, Tamil Nadu, India

Corresponding Author: Vijay P

Abstract

The world is indeed changing rapidly, with the increasing use of digital technologies having both advantages and disadvantages. One major issue in this digital world is the spread of false news, which can easily be disseminated through various online platforms. To address this problem, machine learning has emerged as a powerful tool for detecting false news. Machine learning refers to the utilization of algorithms to learn patterns automatically, without requiring explicit programming. There exist different types of learning algorithms.

Out of these Algorithms Passive Aggressive Classifier and Decision Tree have obtained higher accuracy of 100%, which is verified by confusion Matrix.

Keywords: Machine learning, supervised learning, logistic regression, support vector classifier, passive aggressive classifier, random forest, decision tree, k nearest neighbour. out of these algorithms passive aggressive classifier, decision tree, accuracy, confusion matrix, vectorizer

1. Introduction

The widespread use of these platforms has facilitated the rapid spread of false information, which can have grave consequences. Such misleading content can be employed to sway public opinion, slander individuals or organizations, and even incite violence. Given the powerful role that information plays in shaping people's perceptions and influencing their actions, it is imperative to combat false news. To this end, a practical strategy that accounts for various factors should be devised, the identification of patterns and attributes that indicate falsity, and the application of network analysis to pinpoint sources and patterns of misinformation dissemination.

Overall, combating false news requires a multifaceted approach that combines machine learning algorithms, network analysis, and targeted interventions. By developing effective strategies for detecting and preventing the spread of fake news, we can help to mitigate the harmful effects of false information and promote more informed and responsible communication online.

2. Existing system

The authors approach that these methods exhibit only moderate levels of accuracy in distinguishing false news, which is a cause for concern. In Existing work when the

train and test ratio is taken as 80:20, the maximum accuracy of 94.95% is obtained, which is a good accuracy but not a perfect one and Decision Tree obtains only 81.45% which is very less. Thus, this work is moderately accurate for predicting false news. Dataset with more accurate news will help to increase the accuracy.

One way to improve the accuracy of fake news detection models is to use more accurate news articles in the training and testing datasets. This can be achieved by carefully curating the datasets to ensure that they contain a representative sample of both genuine and fake news articles that are accurately labeled.

In addition, researchers can explore new features and techniques for modeling and classifying fake news, such as natural language processing, sentiment analysis, and deep learning. By continuing to refine and improve these methods, we can work towards developing more accurate and effective fake news detection models that can help combat the spread of false information online.

3. Proposed system

In existing work they used two algorithms as of us and obtained only moderate accuracy. So this work will be in such a way that the accuracy will be less than or equal to cent percentage. We take the input from the user and does

Data Preprocessing and by using the vectorizer the data is handled. To generate a vectorizer for the text, we remove commonly used English words (Stop Words) and only focus on the remaining words. Our project involves text classification, for which we will utilize various algorithms.

4. Martials and Methods

The input is a dataset which consists of a list of real and false news. There are various algorithms used in the classification.

5. Workflow

5.1 Data Collection: The dataset, sourced from Kaggle, comprises 20800 rows and 5 columns, denoted by the headers 'Id', 'Title', 'Author', 'Text,' and 'Label'.

5.2 Pre-processing: To improve the efficiency of the data, commonly used stop words like 'a', 'i', 'me', 'our', and 'them' are eliminated. The dataset is analyzed by examining its attributes such as shape, head, tail, info, and null values. The author and title columns are combined into a single column called content, which is then subjected to stemming. Finally, the preprocessed data is fed into prediction algorithms.

5.3 Feature extraction: Once the text has undergone pre-processing, it needs to be transformed into features prior to analysis and modeling. In this context, we employ the Tf-Idf vectorizer.

5.4 Classification: The supervised classifiers such as Logistic Regression, Support Vector Classifier, Passive Aggressive Classifier, Decision Tree Classifier, Random Forest Classifier, K nearest neighbor are used in this model.

6. Logistic Regression

Logistic regression is a frequently employed machine learning technique for resolving binary classification tasks. This method trains a model to estimate the likelihood of a binary outcome by considering the input characteristics. The logit function is used to transform the probability values to binary values that can be used for classification. In the context of identifying false news on social media networks, logistic regression can be used to predict the probability of a news article being true or false. The features can include things like the presence of certain words or phrases, the length of the article, the number of images or videos included, etc. Once the features are extracted, they can be used as input to the logistic regression model, which will output a probability score between 0 and 1. A threshold can then be set to determine based on the probability score.

7. Confusion matrix: In the case of fake news detection, the predicted class labels would be "fake" or "real" and the actual class labels would be the true labels of the news articles. In the context of fake news detection, a confusion matrix is a table that summarizes the performance of a classification model by comparing the predicted class labels with the actual class labels of the news articles. The predicted class labels are the output of the machine learning model, which can be either "fake" or "real" depending on whether the model thinks the news article is fake or real. The actual class labels, on the other hand, are the true labels of the news articles, which are known in advance.

7.1 Confusion matrix

Train-Test split (80-20)

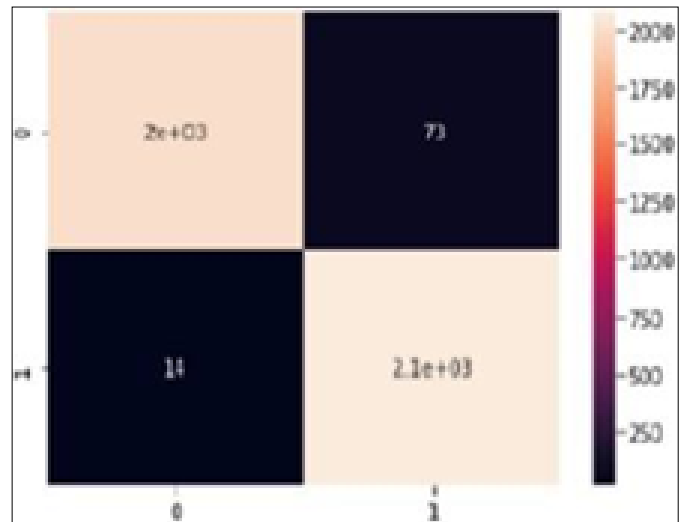


Fig 1: Confusion Matrix

7.2 Support vector classifier

The Support Vector Classifier is a type of learning algorithm that is primarily utilized for performing binary classification tasks. Its primary goal is to identify a hyperplane that can accurately segregate data points into their respective categories. This hyperplane is selected to maximize the margin between different class data points. When applied to fake news detection, the SVC is used to train a model on a set of labelled data comprising real and fake news articles. This trained model can then use the hyperplane it has learned to classify new, previously unseen articles. These features are frequently based on word frequencies or embeddings, which are numerical representations of words that capture their semantic significance.

7.3 Confusion Matrix

Train-Test split (80-20)

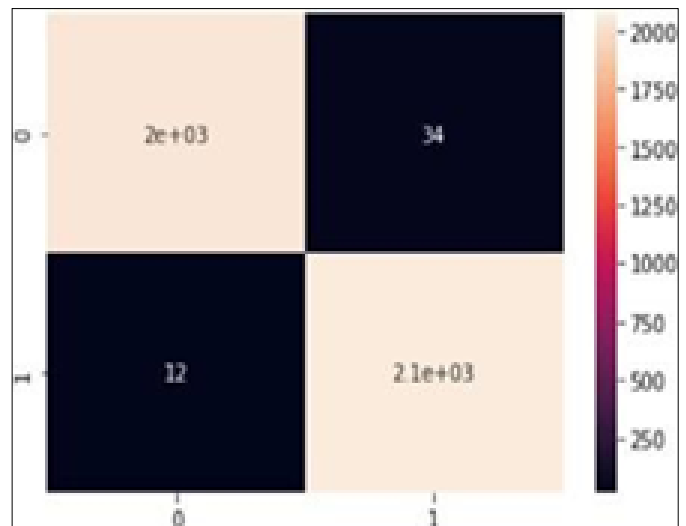


Fig 2: Confusion Matrix

7.4 Passive aggressive classifier

The Passive Aggressive Classifier is a machine learning

algorithm that updates the model only when it encounters a misclassification, making it an efficient training method for large datasets. When applied to detecting fake news, the algorithm can be trained on labeled datasets of real and fake news articles, enabling it to classify new articles based on the extracted features. The classifier maintains a weight vector used to predict whether a new instance is real or fake. If the prediction is wrong, the weight vector is updated to minimize the error, using a "passive-aggressive" approach. This means the update is more aggressive if the instance is misclassified with high confidence and more passive if the instance is misclassified with low confidence.

7.5 Confusion Matrix
Train-Test split (80-20)

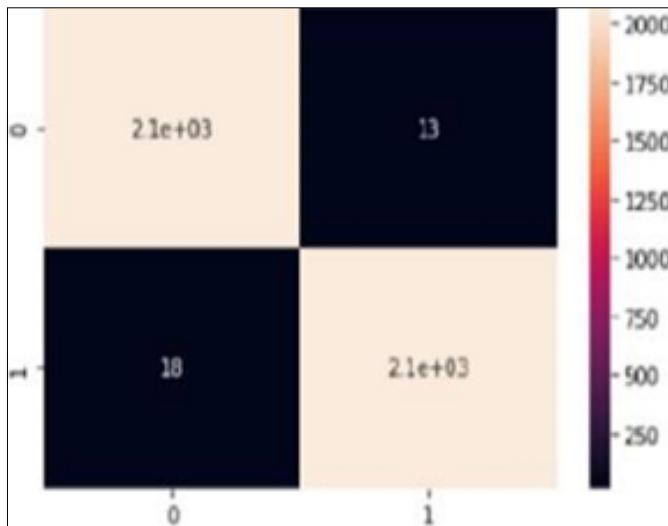


Fig 3: Confusion Matrix

8. Random forest classifier

Random Forest is an learning algorithm that enhances the accuracy by combining various decision trees. Each decision tree can independently predict the class of a new input. For instance, in fake news detection, the input features may consist of various textual and non-textual attributes such as the article's length, use of specific words or phrases, credibility of the source, and so on. By utilizing these characteristics, the algorithm can develop a model that can categorize fresh articles as either genuine or fake. In the context of fake news detection, the input features used by the Random Forest algorithm can include a variety of textual and non-textual attributes that may indicate whether an article is genuine or fake. For example, the length of the article, the use of specific words or phrases, the credibility of the source, the tone of the language used, and the presence of misleading or exaggerated claims can all be useful indicators of fake news.

One of the main advantages of the Random Forest algorithm is its ability to handle high-dimensional data with many input features. It can also handle missing or noisy data, and is relatively insensitive to the choice of hyperparameters. Overall, Random Forest is a robust and effective machine learning algorithm that can be used for a variety of classification tasks, including fake news detection.

8.1 Confusion Matrix
Train-Test split (80-20)

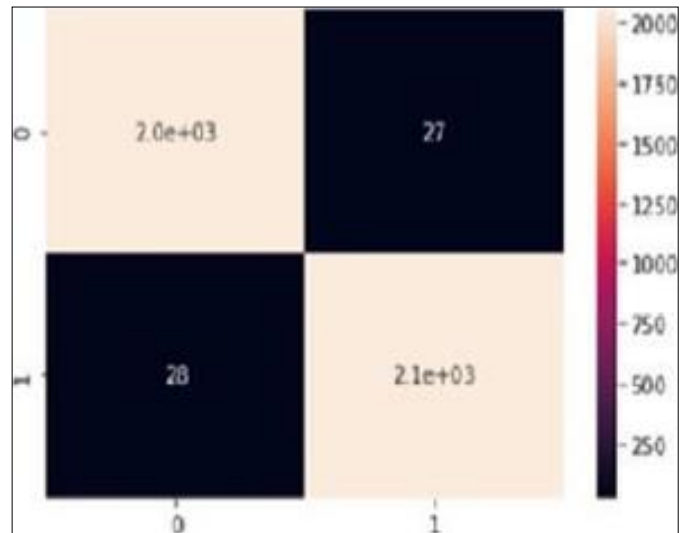


Fig 4: Confusion Matrix

8.2 Decision tree classifier

The decision tree is commonly used in ML for classification tasks. In the context of identifying fake news, decision tree can be identified whether it is real or fake news articles, utilizing specific features like the occurrence frequency of certain phrases or words. The algorithm functions by generating a decision tree model that outlines potential decisions and their outcomes. By dividing the data recursively based on the feature that provides the most each split results in two new nodes, one for the decision when the feature is present and the other for the decision when the feature is absent.

8.3 Confusion Matrix
Train-Test split (80-20)

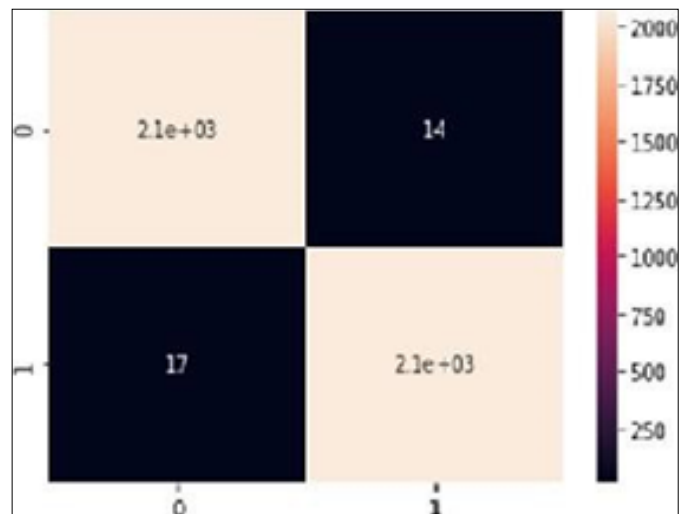


Fig 5: Confusion Matrix

8.4 K-Nearest Neighbours

The K-nearest neighbors classifier is a versatile ML tool used for the purposes of classification and regression tasks.

To accomplish this, the algorithm initially establishes a distance metric between the feature vectors of each news article in the dataset. Subsequently, when presented with a new article to classify, the algorithm identifies the K most similar articles in the dataset based on the established distance metric.

8.5 Confusion Matrix

Train-Test split (80-20)

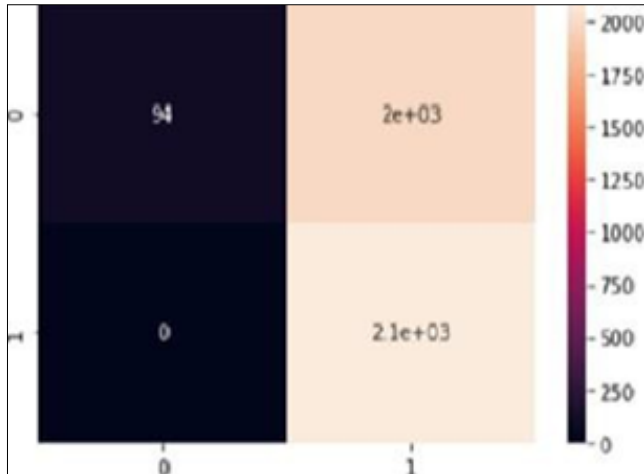


Fig 6: Confusion Matrix

Flowchart

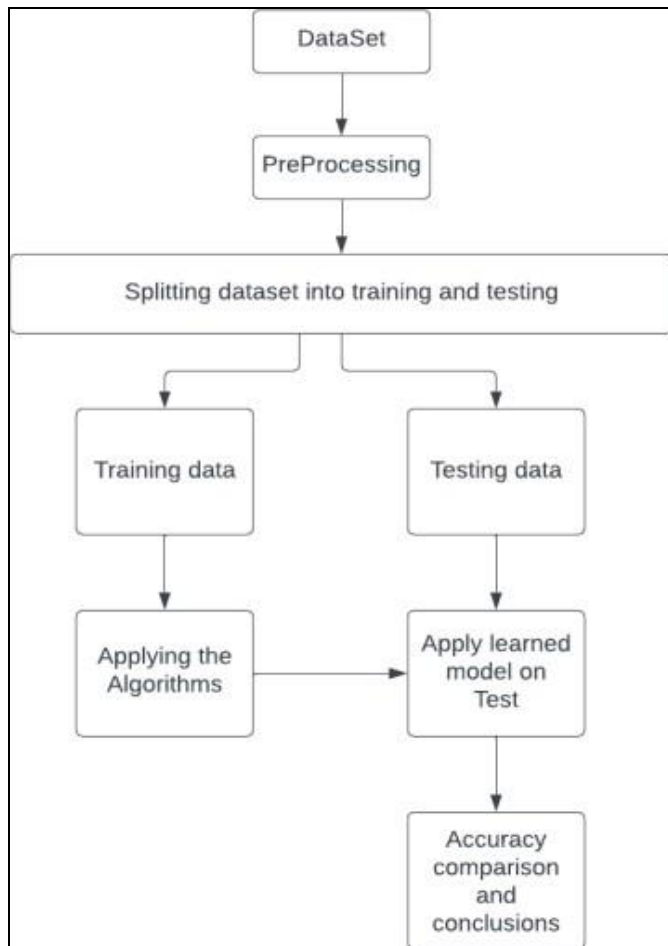


Fig 7: Flow Chart for Prediction

9. Results and Discussion

The study involved conducting various test-train splits on datasets and evaluating six classifiers, namely Logistic Regression, Support Vector Classifier, Passive Aggressive Classifier, Random Forest, Decision tree, and K nearest neighbor, to determine the best-performing classifier for implementation. An guaranteeing the model's ability to generalize well. The analysis revealed that the Classifier outperformed the other classifiers, with a 100% accuracy rate in the training data and 99% in the test data using the tf-idf vectorizer. Consequently, the model was constructed based on these classifiers.

Table 1: Accuracies for different Classifiers

S. No	Algorithms	Accuracy	
		Train	Test
	80-20		
1	Logistic Regression	0.9865	0.9790
2	Support Vector Classifier	0.9990	0.9889
3	Random Forest Classifier	0.9994	0.9867
4	Passive Aggressive Classifier	1.00	0.9925
5	Decision Tree Classifier	1.00	0.9925
6	K-Nearest Neighbors	0.5360	0.5233

10. Conclusion and future works

To address this issue, we explored the potential of supervised machine learning algorithms. We trained these classifiers with a dataset and evaluated their performance using their accuracy. Our findings the algorithms, with the use of tf-idf vectorizer, delivered better results compared to other classifiers. However the performance, and future research could focus on the use of unsupervised machine learning classifiers for false news detection.

11. References

- Sharma U, Saran S, Patil SM. Fake News Detection using Machine Learning Algorithms, International Journal of Engineering Research & Technology (IJERT). 2021;9:509-518.
- Indarapu SRK, Komalla J, Inugala DR, Kota GR, Sanam A. Comparative analysis of machine learning algorithms to detect fake news, International Conference on Signal Processing and Communication (ICPSC); c2021. p. 591-594.
- Khanam Z, Alwasel BN, Sirafi H, Rashid M. Fake News Detection Using Machine Learning Approaches, IOP Conference Series: Materials Science and Engineering; c2021. p. 1-13.
- Ahmad I, Yousaf M, Yousaf S, Ahmad MO. Fake News Detection Using Machine Learning Ensemble Methods, Hindawi; c2020. p. 1-11.
- Smitha N, Bharath R. Performance Comparison of Machine Learning Classifiers for Fake News Detection, International Conference on Inventive Research in Computing Applications (ICIRCA); c2020. p. 696-700.
- Mugdha SBS, Ferdous SM, Fahmin A. Evaluating Machine Learning Algorithms For Bengali Fake News Detection, International Conference of Computer and Information Technology (ICCIT); c2020.
- Tiwari V, Lennon RG, Thomas Dowling, "Not Everything You Read Is True! Fake News Detection using Machine learning Algorithms, 31st Irish Signals and Systems Conference (ISSC); c2020.
- Ngada O, Haskins B. Fake News Detection Using

- Content-Based Features and Machine Learning, IEEE Asia-Pacific Conference on Computer Science and Data Engineering (CSDE); c2020.
9. Adrian M, Brasoveanu P, Andonie R. Integrating Machine Learning Techniques in Semantic Fake News Detection, Springer Science+Business Media; c2020.
 10. Jain MK, Gopalani D, Meena YK, Kumar R. Machine Learning based Fake News Detection using linguistic features and word vector features, IEEE 7th Uttar Pradesh Section International Conference on Electrical, Electronics and Computer Engineering (UPCON); c2020.
 11. Manzoor SI, Dr. Singla J, Nikita. Fake News Detection Using Machine Learning approaches: A systematic Review, Third International Conference on Trends in Electronics and Informatics (ICOEI); c2019. p. 230-234.
 12. Khan JY, Khondaker TI, Iqbal A, Afroz S. A Benchmark Study on Machine Learning Methods for Fake News Detection, Machine Learning with Applications. 2019;4:1-14.
 13. Julio C, Reis S, Correia A, Murai F, Veloso A, Benevenuto F. Explainable Machine Learning for Fake News Detection, Web. Sci '19: Proceedings of the 10th ACM Conference on Web Science; c2019. p. 17-26.
 14. Poddar K, Bessie G, Amali D, Umadevi KS. Comparison of Various Machine Learning Models for Accurate Detection of Fake News, Innovations in Power and Advanced Computing Technology (i-PACT); c2019. p. 1-5.
 15. Jain A, Shakya A, Khatter H, Gupta AK. A Smart System for Fake News Detection Using Machine Learning, 2nd International Conference on Issues and Challenges in Intelligent Computing Techniques (ICICT); c2019.